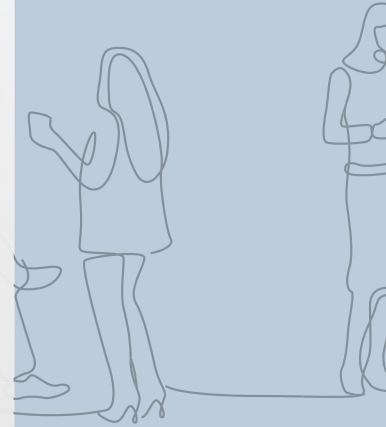


## For thinking big

Space 6 comes with plenty of space for creative teams to embark on wild idea expeditions.

The modular structure means that you can quickly change your Space size when you need it. By adding modules you can upgrade your Space size for as many people as you like or you can easily get two or three separate Spaces by splitting the modules.



Modular

Quiet

Smart

Wheels for relocation

Easy to Install

Plug&Play

## Product info

### Size

Exterior 240 x 229 x 362 cm  
94 x 90 x 143 in

Interior 220 x 205 x 356 cm  
87 x 81 x 140 in

### Weight

1730 kg/3814 lb

### Door

Right or left handed

### Aluminium profiles

Standard colours

### Glass

Clear glass up to Rw 40 dB

### Wall, Ceiling

EchoFree acoustic panels, standard colours

### Floor

Carpet, standard colours



Modular flexibility



On wheels



Sound insulation



Acoustic panels



Automated air circulation






LED



110-240 V + 5 V USB


## Interior colour

### Standard colours

-  Light Grey
-  Dark Grey
-  Black

## Exterior colour

### Standard colours

-  White
-  Grey
-  Black

Additional colours for extra fee.  
See next page



**Additional colours for extra fee**



Aquamarine



Aubergine



Bambus



Basalt



Blue Navy



Bordeaux



Burnt Orange



Citrus Green



Camouflage



Cappuccino



Coal



Cotton



Fresh



Eden



Frozen Blue



Hot Pepper



Indian Summer



Blue Tiber



Jade



Orange



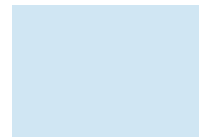
Signal Green



Marshmallow



Mint



Blue Iris



Azurite



Opal



Quartz



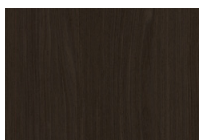
Chilli



Mango



Oak veneer



Dark Oak veneer

