

More space for ideas

Space 4 cosily fits four people for an efficient brainstorming session or for a longer meeting that requires everyone to be on the same wavelength.

The modular structure means that you can quickly change your Space size when you need it. By adding modules you can upgrade to a 6 people Space. You can also get two 2-people Spaces by splitting your modules.



Modular

Quiet

Smart

Wheels
for relocation

Easy
to Install

Plug&Play

Product info

Size

Exterior 240 cm x 242 cm x 227 cm
Interior 220 cm x 236 cm x 205 cm

Weight

1250 kg

Door

Right or left handed

Aluminium profiles

Standard colours

Glass

Clear glass up to Rw 40 dB

Wall, Ceiling

EchoFree acoustic panels,
standard colours

Floor

Carpet, standard colours

Smart Solution

Booking function, CO₂ sensor, inside temperature, presence sensor, light, ventilation, and user data history are all controllable and accessible over WiFi



Modular flexibility



On wheels



Sound insulation



Acoustic panels



Automated air circulation



LED



110-240 V + 5 V USB



App for pod's climate control and booking (only with Smart Solution)

Interior colour

Standard colours

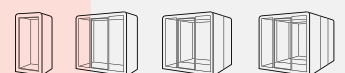
-  Light Grey
-  Dark Grey
-  Black

Exterior colour

Standard colours

-  White
-  Grey
-  Black

Additional colours for extra fee. See next page



Additional colours for extra fee



Aquaremarine



Aubergine



Bambus



Basalt



Blue navy



Bordeaux



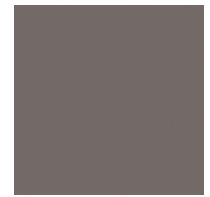
Burnt orange



Cactus



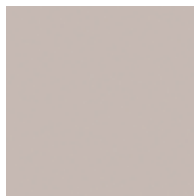
Camouflage



Cappuccino



Coal



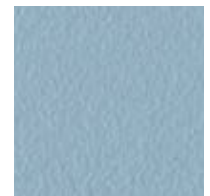
Cotton



Dark violet



Emerald



Frozen blue



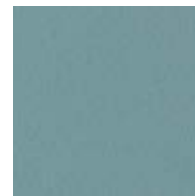
Hot pepper



Indian summer



Indigo blue



Jade



Lavender



Lime tree



Marshmallow



Mint



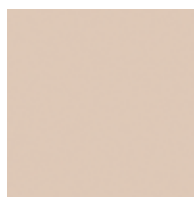
Moon blue



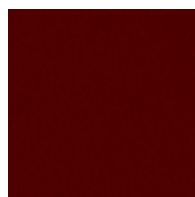
Night blue



Opal



Quartz



Red ruby



Sun yellow

